



andreea hriscu portfolio

Curriculum Vitae

Andreea Catalina Hriscu

andreea.hriscu@gmail.com / +420775241218



D.O.B 27/11/1984
Nationality Romanian
Place of Birth Bucharest, Romania
Address Manteuffelstraße 20, 10997 Berlin, Germany
Languages - English [fluent]
Romanian[fluent]
Spanish [conversational]
French [conversational]
Chinese - Mandarin [beginner]
German [beginner]

Education **Dipl. Arch. - RIBA Part II - Masters Equivalent**
• Bucharest University of Architecture & Urbanism “Ion Mincu”, 2003 - 2011
• “Mihai Eminescu” National College, math & computer science track, 1999 - 2003

Proficiency Rhino3D, AutoCAD, 3Ds Max [texturing and rendering], Vray, Adobe Creative Suite, SketchUp

Soft skills Ability to work well both independently and in a team structure, good research and analysis abilities, creative and critical thinker, good communicator, ability to organize and prioritize work, ability to see the big picture

Employment **Rhinescheme GmbH – Senior Architect**
Beijing - 10/2015 - 07/2017
Cultural, hospitality, commercial projects, and Urban Planning
Responsibilities:
• Produced urban planning concepts and architectural conceptual and preliminary design incl. development of principle details
• Coordinated the design team, and collaborated with other companies such as render shops, Local Design Institutes
• Research works by gathering information of a variety of planning-related factors, gave design proposals, at the same time followed building codes and related regulations
• Participated in competitions and led the design team
• Modelled complex geometry from concept to completed designs for coordination
• Produced interior and exterior renderings, processing of images in PS, diagrams and produced the Presentation Package for client meetings
• Conducted meetings with consultants, engineers and Local Design Institute
• Reviewed and developed layouts and specifications for construction packages
BLVD International – Interior Designer, Team Leader
Beijing - 02/2015 - 09/2015
Office buildings public space
Responsibilities:
• Produced and oversaw concept designs along with principal
• Managed running of design team
• Modelled complex geometry from concept to completed designs for coordination
• Reviewed and developed layouts and specifications for construction packages along with the technical teams

Employment

Studio Pei Zhu – Design Architect, Design Leader

Beijing - 03/2012 - 02/2015

Cultural projects, medium to large scale

Responsibilities:

- Produced and oversaw concept designs along with principal
- Managed running of design team
- In charge of design, program distribution concept, layout development, interior design and facade material studies (RIBA stages 2 to 4)
- Created and implemented schedules for the different stages of the projects
- Modelled complex geometry from concept to completed designs for coordination
- Produced interior and exterior renderings, processing of images in PS, diagrams and produced the Presentation Package for client meetings
- Conducted meetings with consultants, engineers and Local Design Institute
- Performed site visits along with the Project Architect to follow up design implementation
- Reviewed and developed layouts and specifications for construction packages

West Group Architects – Junior Architect

Bucharest - 09/2011 - 02/2012

Commercial residential and office projects, medium to large scale

Responsibilities:

- Produced concept designs along with principal
- Modelled complex geometry from concept to completed designs for coordination
- Produced interior and exterior renderings, processing of images in PS, diagrams and produced the Presentation Package for client meetings
- Produced and modified drawings for different design stages
- Reviewed and developed layouts and specifications for construction packages

Project A01 Architects – Intern

Vienna - 08/2010 - 12/2010 - Cultural and residential projects, small to medium scale

Responsibilities:

- Produced concept designs along with principal
- Modelled complex geometry from concept
- Produced interior and exterior renderings, processing of images in PS, diagrams
- Produced and modified drawings for different design stages
- Produced program layouts

Freelancing

International School – Hebei Province , China – 09/2018 – 12/2018 –Team of three

• Produced architectural design, program layouts, renderings, drawings, presentation of Schematic Design package

Wanjing Metal Hands Café – Beijing, China – 08/2018– 10/2018

• Produced interior design, layouts, renderings, drawings, presentation package for client, followed up the construction process managing the construction team in close contact with the client

Jiaodaokou Metal Hands Café – Beijing, China – 08/2017– 10/2017

• Produced interior design, layouts, renderings, drawings, presentation package for client, followed up the construction process managing the construction team in close contact with the client

References

Wolf Loebel, Rhinescheme GmbH , principal
wolf.loebel@rhinescheme.com, +86 13911733670

Personal Projects



Jiaodaokou Metal Hands Café

Located in the famous Beijing Hutongs, in a 400 years old house, the design for this project focused on honouring the old and welcoming the new, showing some of the old brick walls and the old salvaged and reinforced wooden structure, in stark contrast with the new rough and modern concrete panels, contrast highlighted by skilfully placed lights. The space is generous in natural light, with a beautiful skylight dominating the interior.

Metal Hands Café - Freelance 2017 –reconversion-interior design built



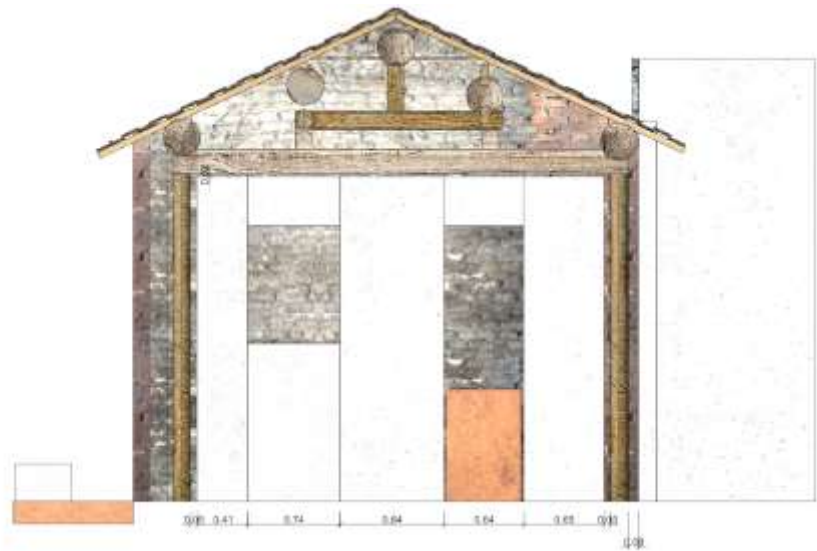
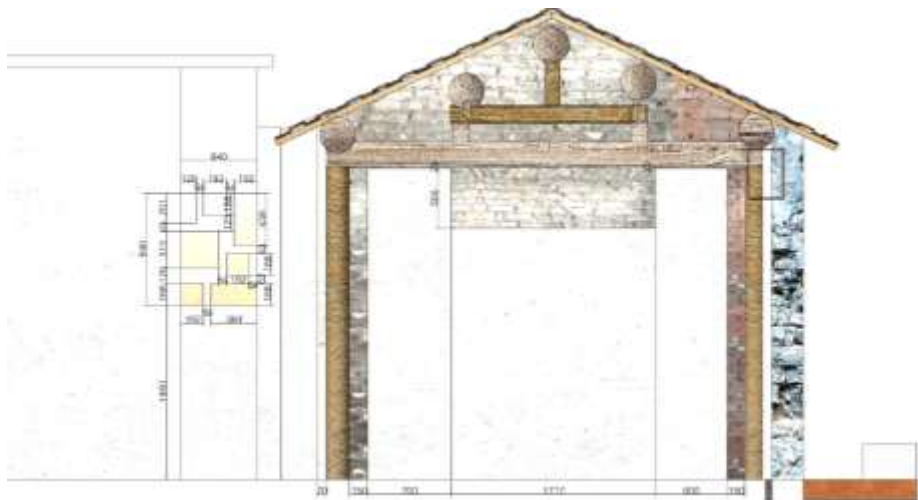
Metal Hands Café - Freelance 2017 –reconversion-interior design built



Metal Hands Café - Freelance 2017 –reconversion-interior design built



Metal Hands Café - Freelance 2017 –reconversion-interior design built



Metal Hands Café - Freelance 2017 –reconversion-interior design built



Metal Hands Café - Freelance 2017 –reconversion-interior design built



Metal Hands Café - Freelance 2017 –reconversion-interior design built



Metal Hands Café - Freelance 2017 –reconversion-interior design built



Wanjing Metal Hands

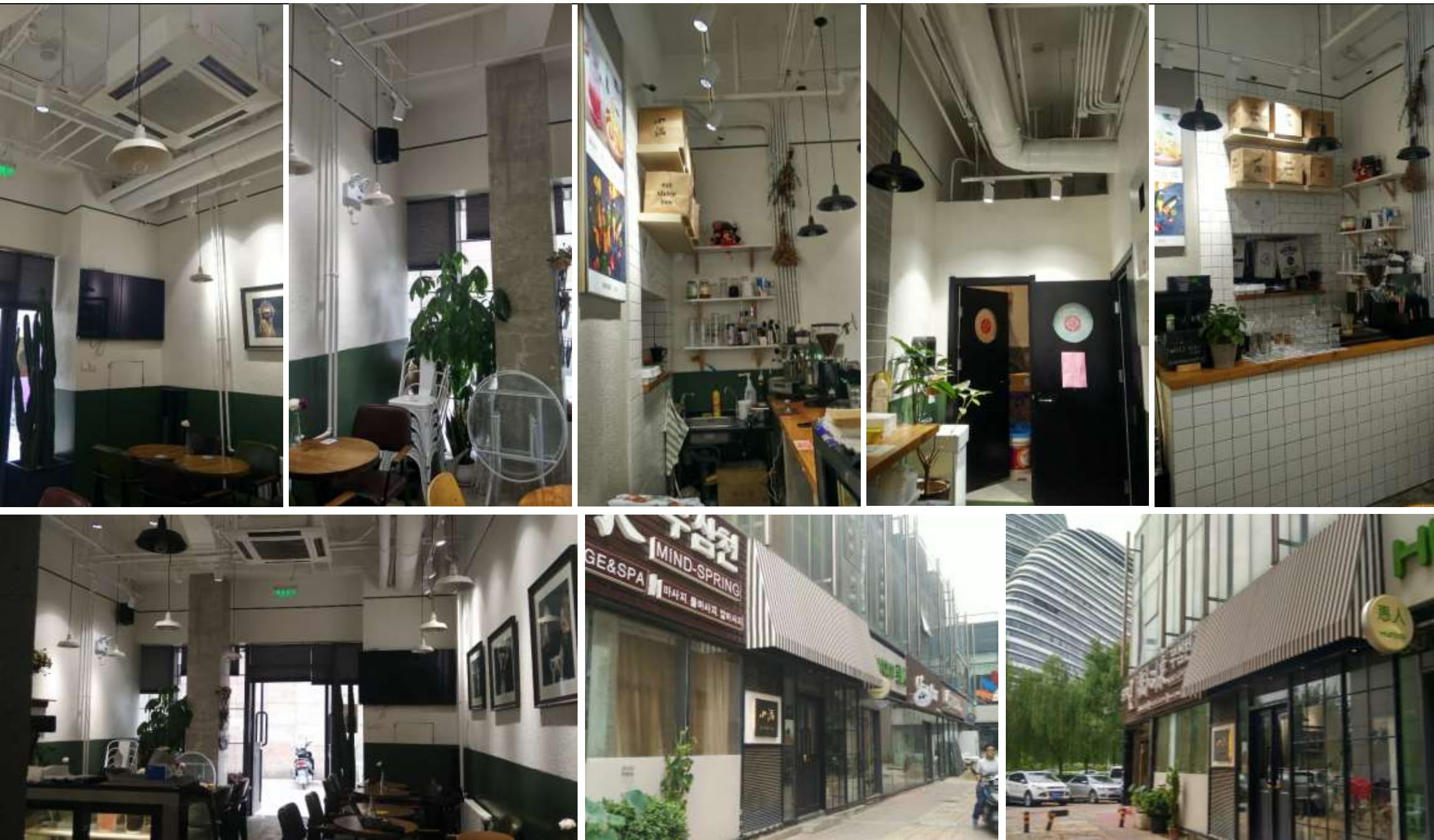
The second café project designed for Metal Hands, a famous roaster/coffee shop chain in Beijing. Keeping the already formed identity of the Metal Hands brand, this design makes use of a masterful combination of wood, steel and concrete, though this particular shop is situated in a corporate area, the clean white walls seem to accommodate the character of the area



Wanjing Metal Hands Café - Freelance 2018 –interior design - built



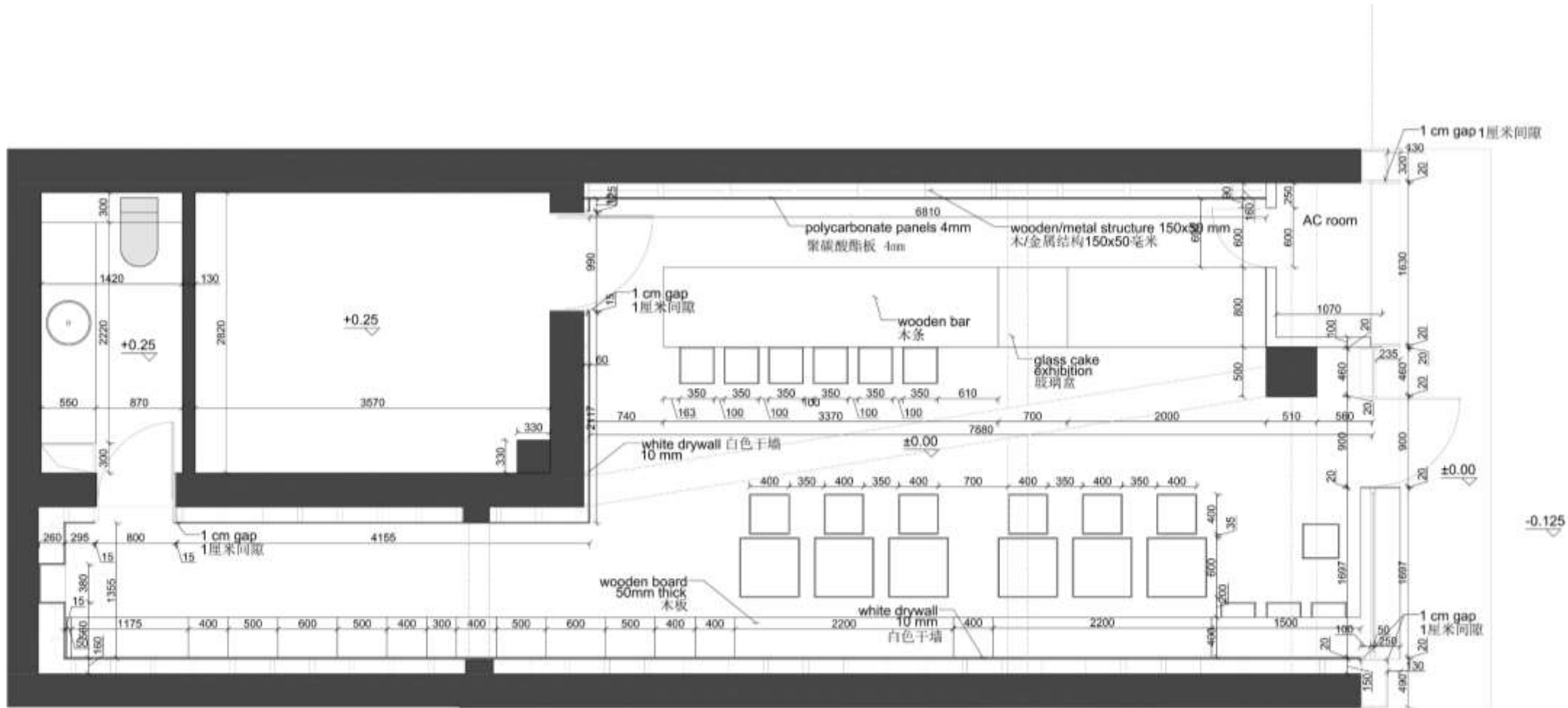
Wanjing Metal Hands Café - Freelance 2018 –interior design - built



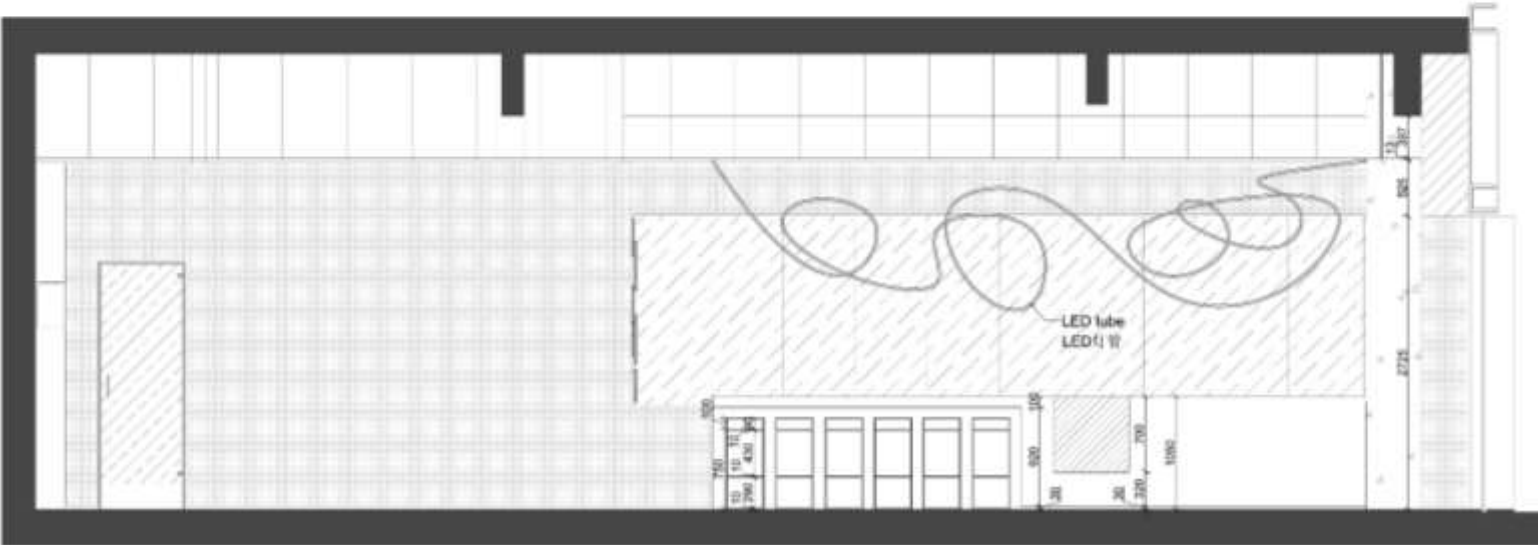
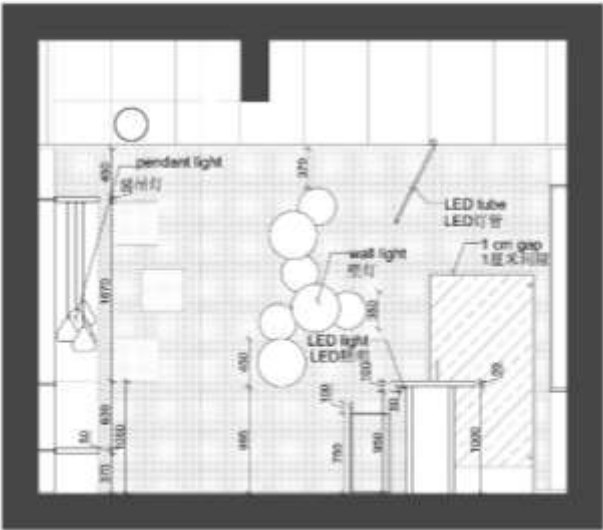
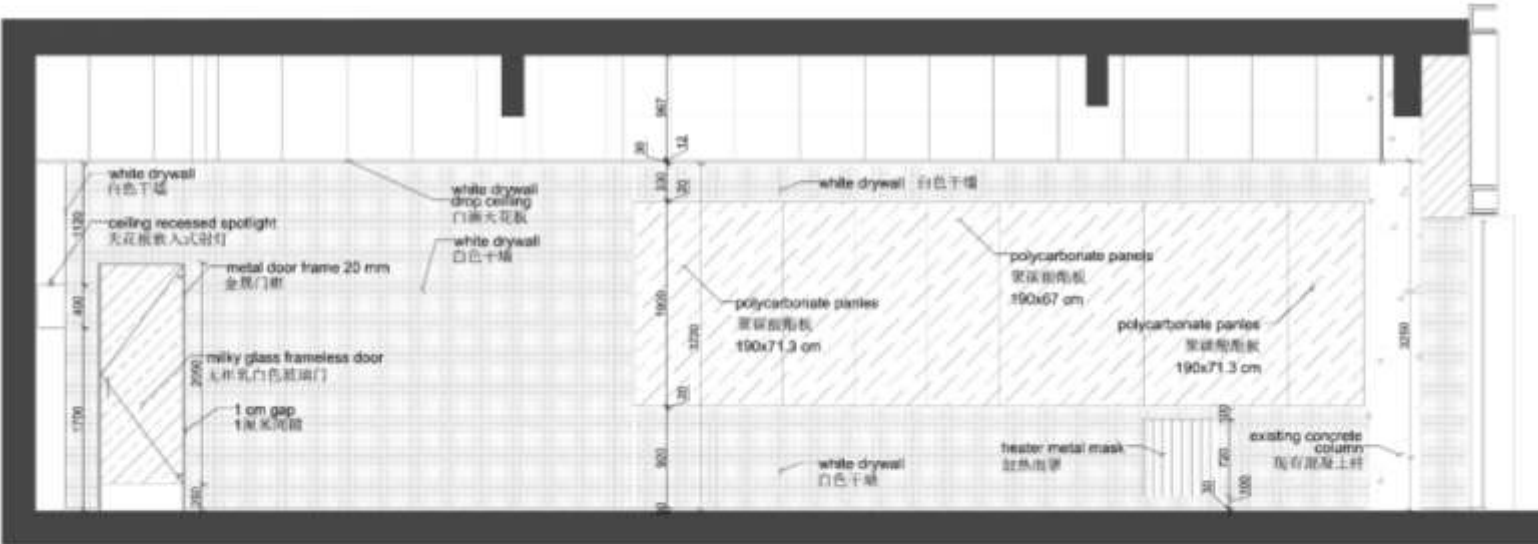
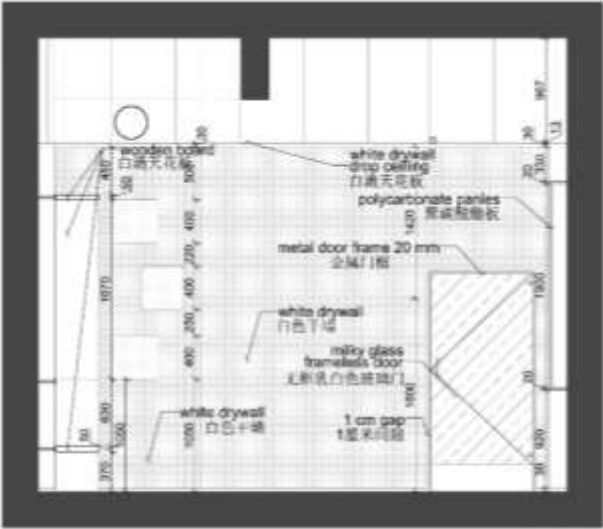
Wanjing Metal Hands Café - Freelance 2018 –interior design - built



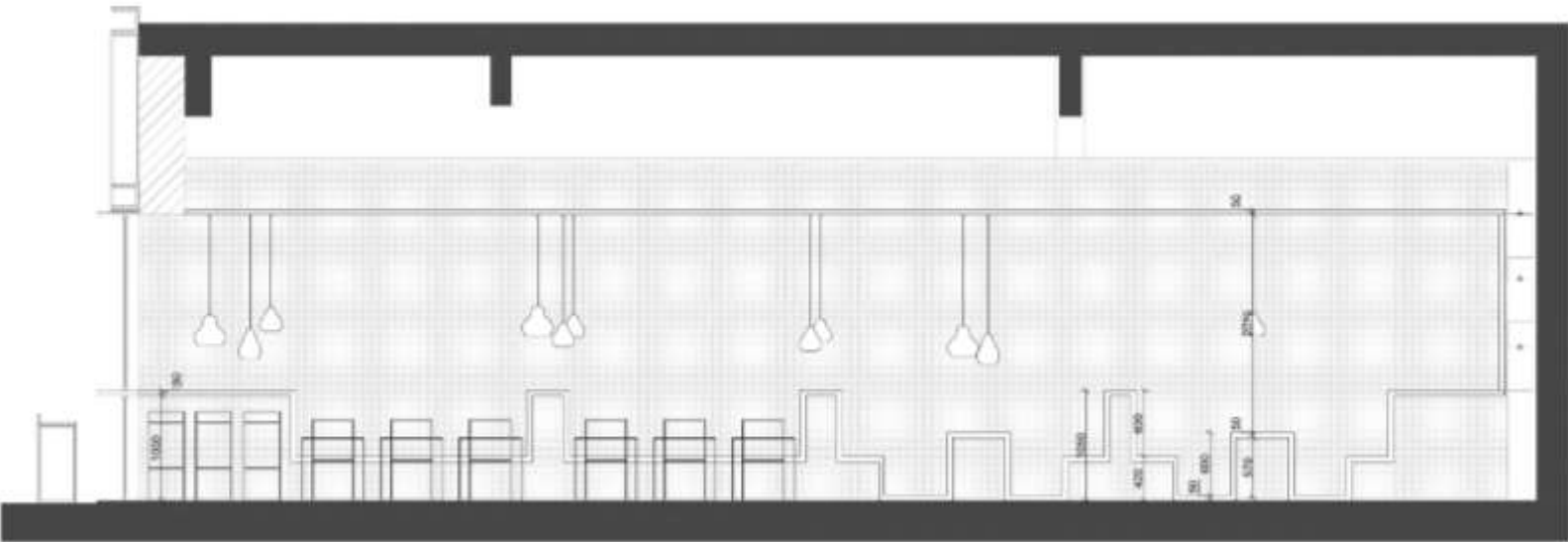
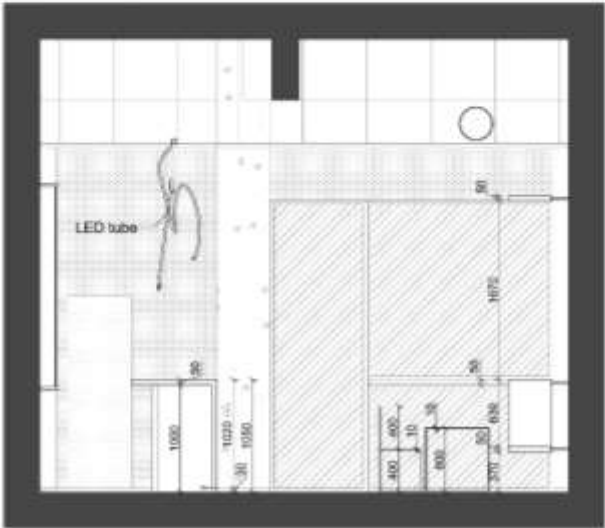
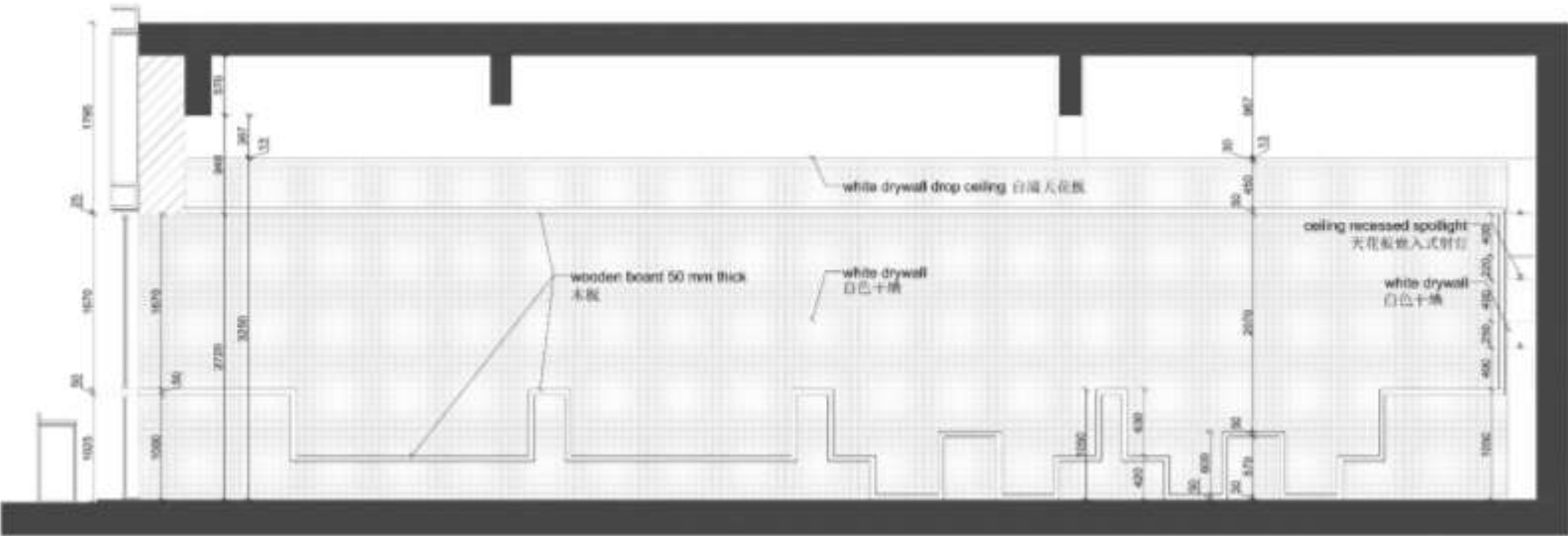
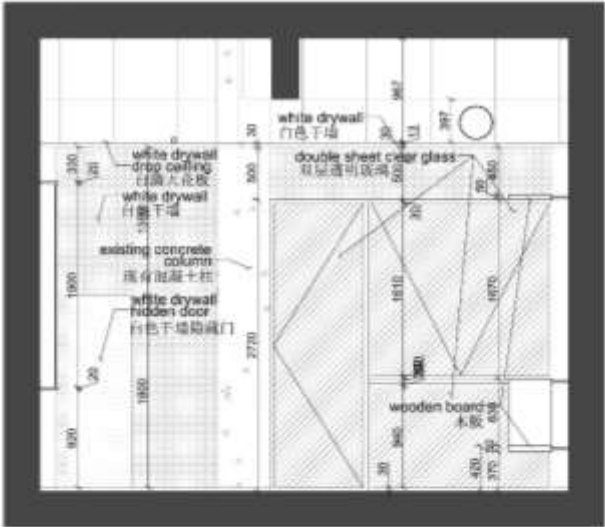
Cafe plan



Wanjing Metal Hands Café - Freelance 2018 –interior design - built



Wanjing Metal Hands Café - Freelance 2018 –interior design - built



Wanjing Metal Hands Café - Freelance 2018 –interior design - built



Wanjing Metal Hands Café - Freelance 2018 –interior design - built





International School – Hebei Province

A private international school in Hebei Province aims to provide a modern, inclusive, multicultural and accommodating space for children ranging from primary school to high school. The compound hosts the school as well as student and teacher dorms and administrative space, all surrounding and outdoor playground. The design focuses on providing the best quality spaces for the children, bringing in natural light as well as shade where necessary.

International School – Hebei Province – Freelance 2018 -commission–schematic design



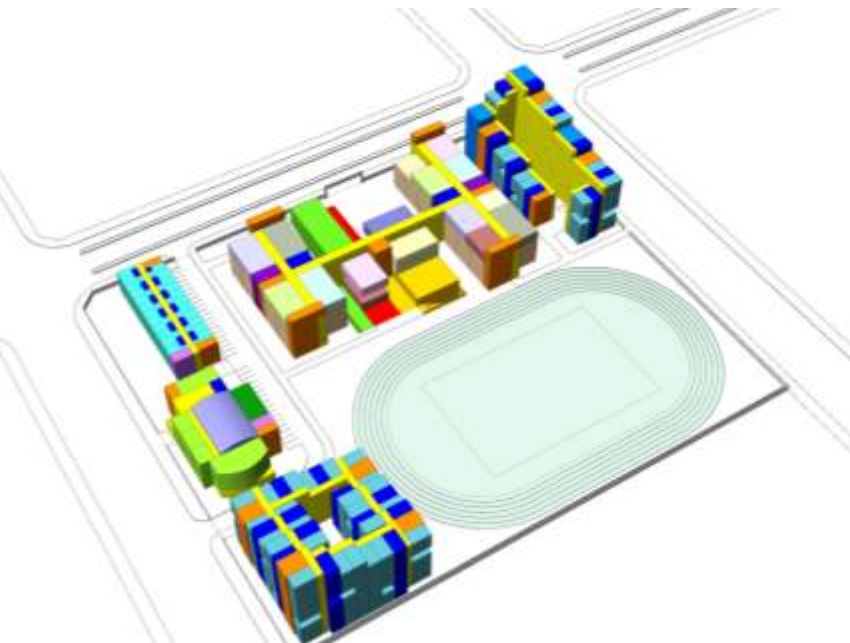
International School – Hebei Province – Freelance 2018 -commission–schematic design



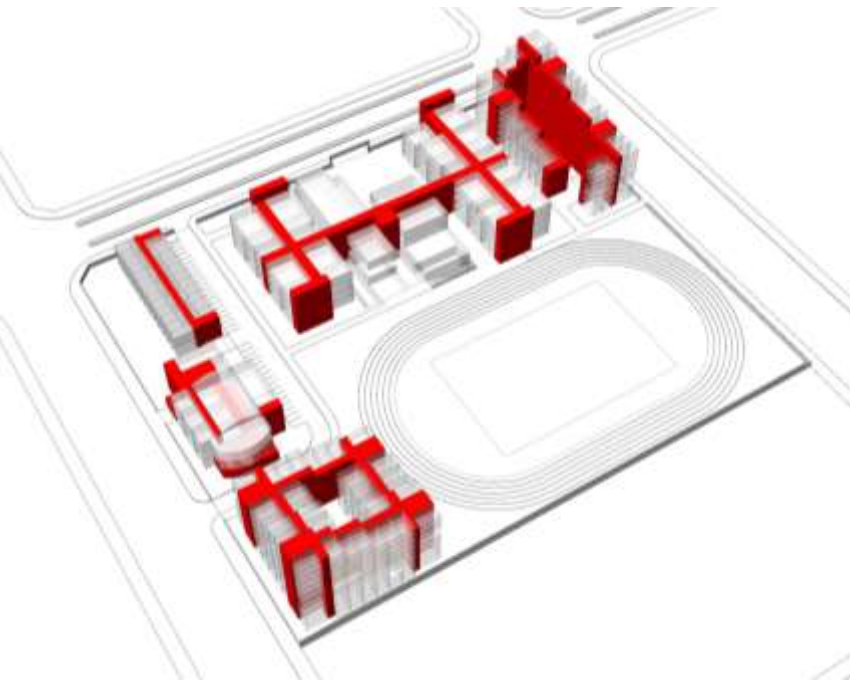
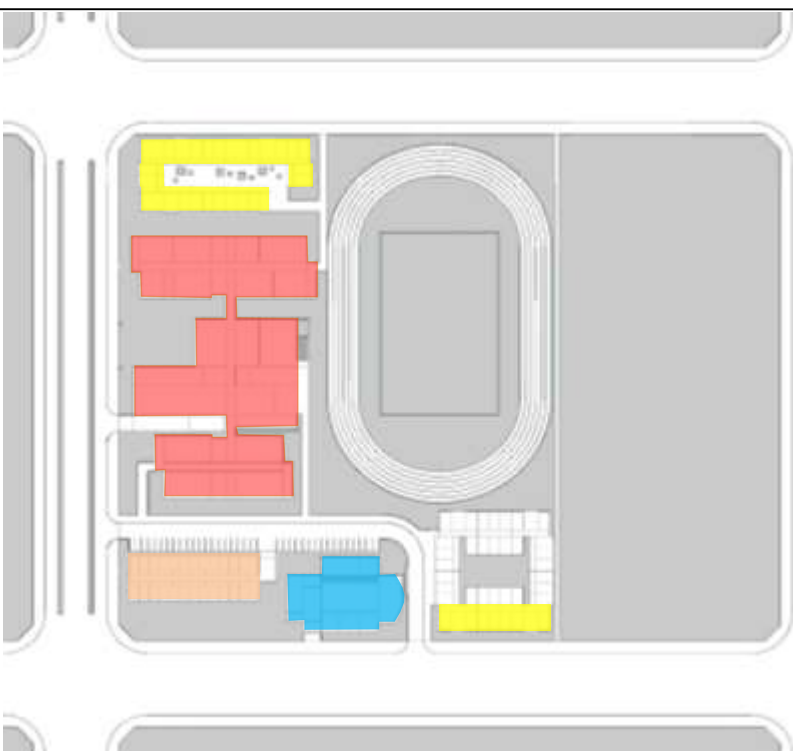
International School – Hebei Province – Freelance 2018 -commission–schematic design



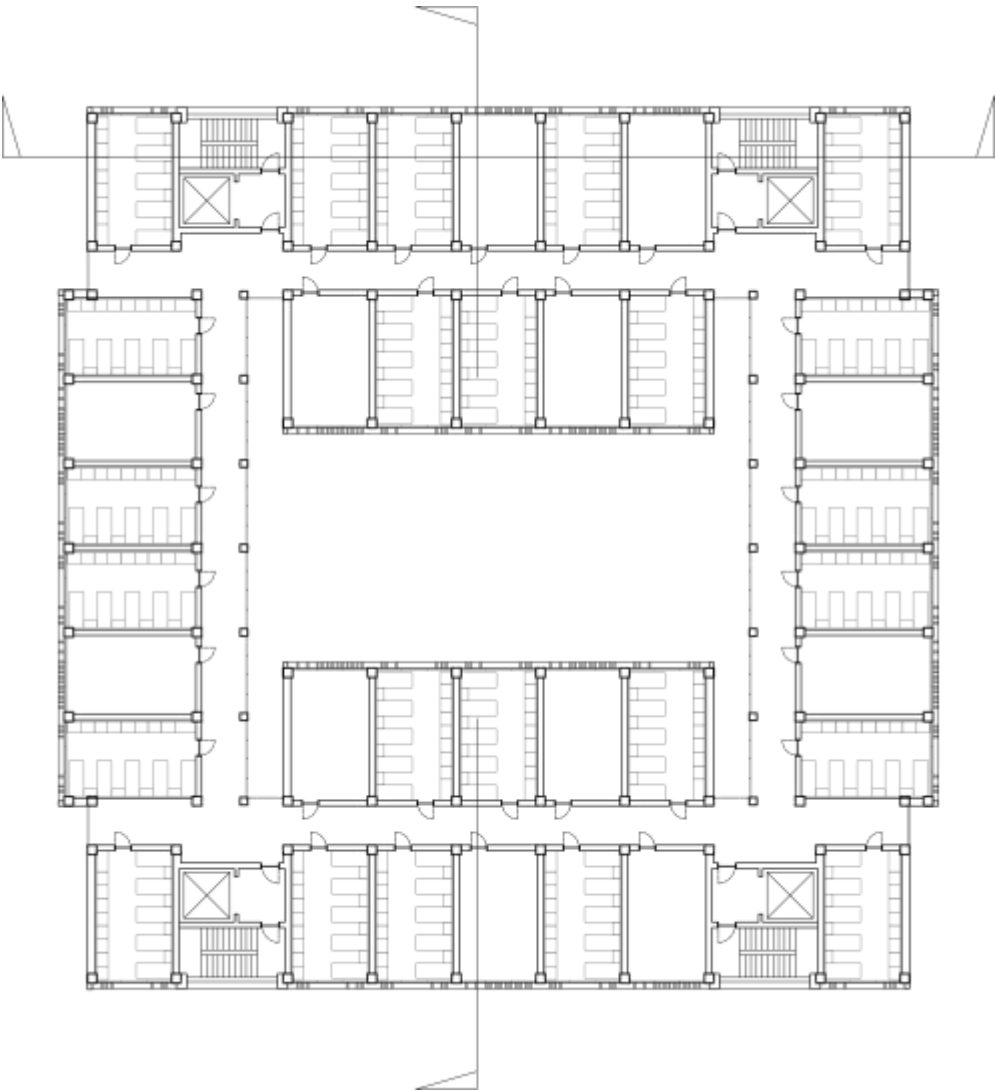
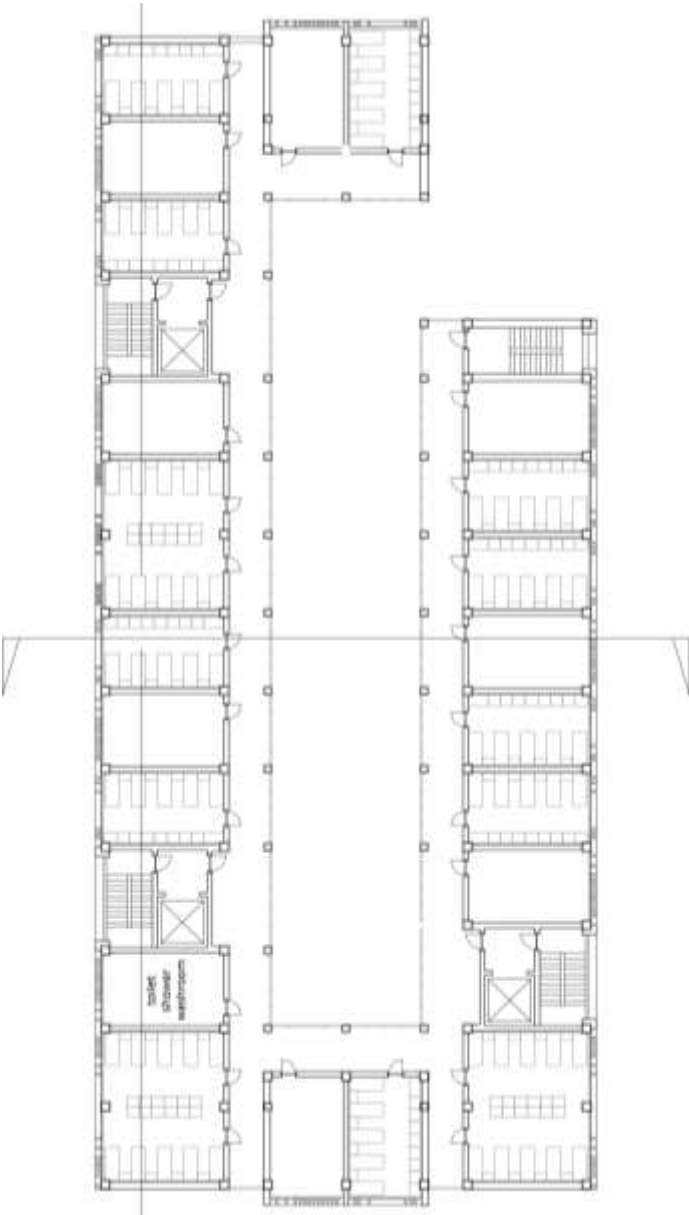
International School – Hebei Province – Freelance 2018 -commission–schematic design



- Classrooms
- Biochemistry class
- Mess hall
- Art Class
- Library
- Gymnasium
- Auditorium
- Multimedia
- Music Class
- Multifunction
- Toilets
- Cores
- Corridors
- Playground
- Teachers rooms
- Office
- Meeting rooms
- Archive rooms
- Student dorm small



- School
- Student Dorms
- Teacher Dorms
- Office





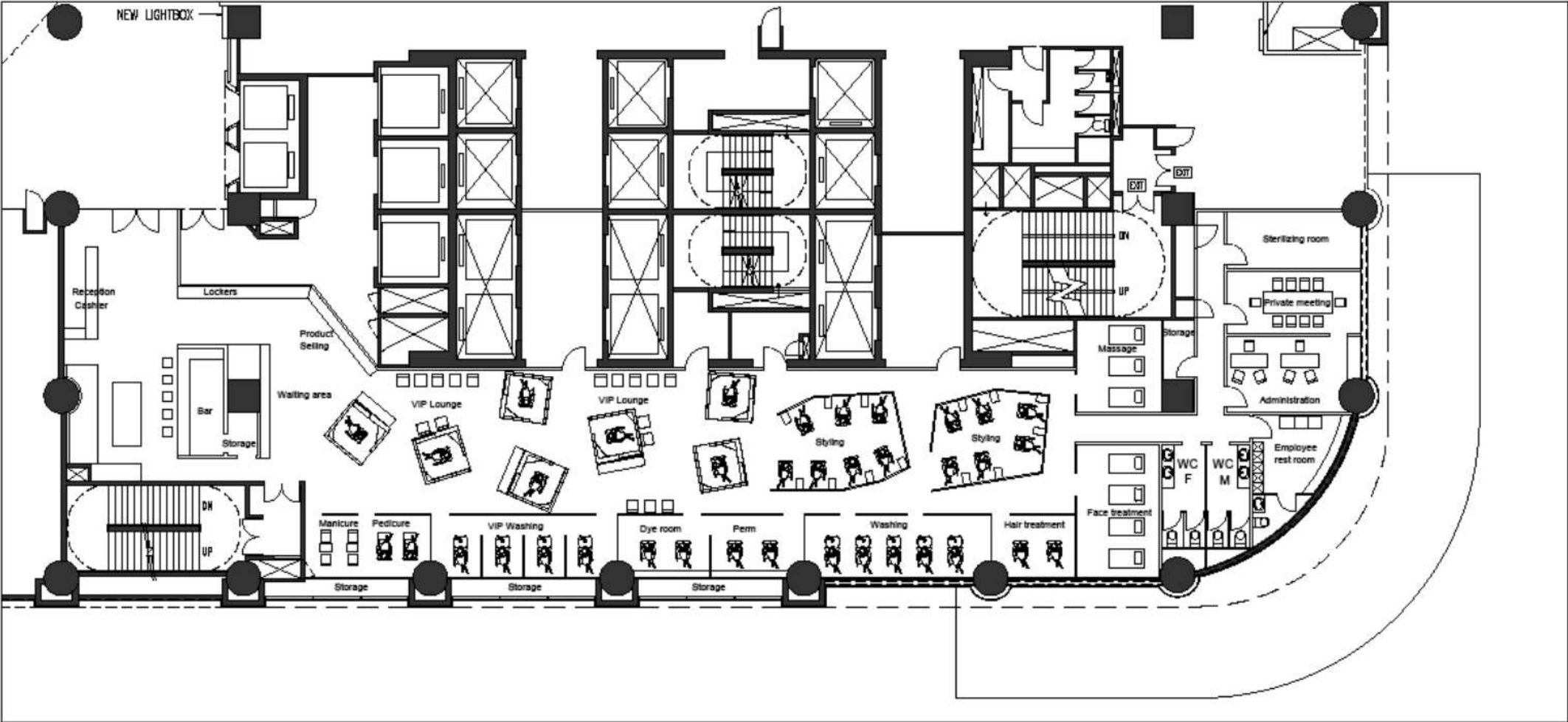
Hairdresser Chain Beijing

This project is focused around providing an exciting experience for the clients, and is doing so through the VIP cubes that serve a client at a time, providing a private space surrounded by mirrors, both inside and outside the cubes, for one to be able to see oneself from all the angles, and have a better control over the desired results. The rest of the space keeps an austere look comprised mainly of bare concrete and a few wooden elements, to emphasize even more the mirror cubicals

Hairdresser - Freelance 2018 – commission–interior design-concept



Hairdresser - Freelance 2018 – commission–interior design-concept



Studio Pei Zhu - selected projects



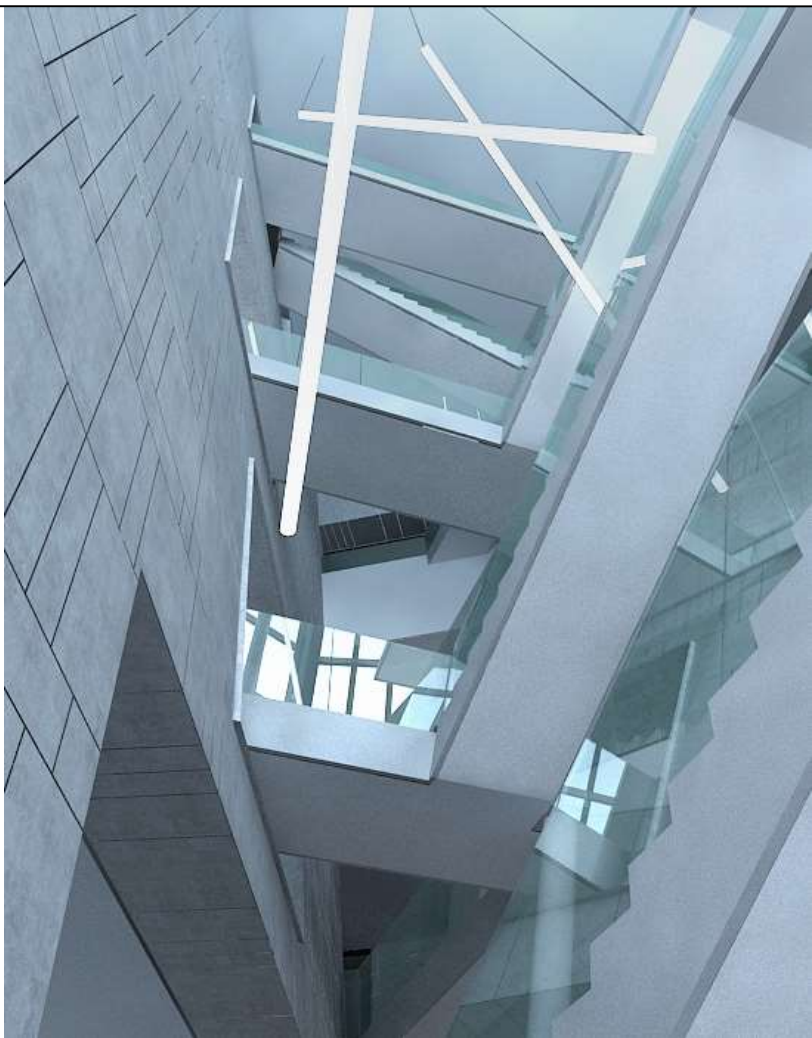
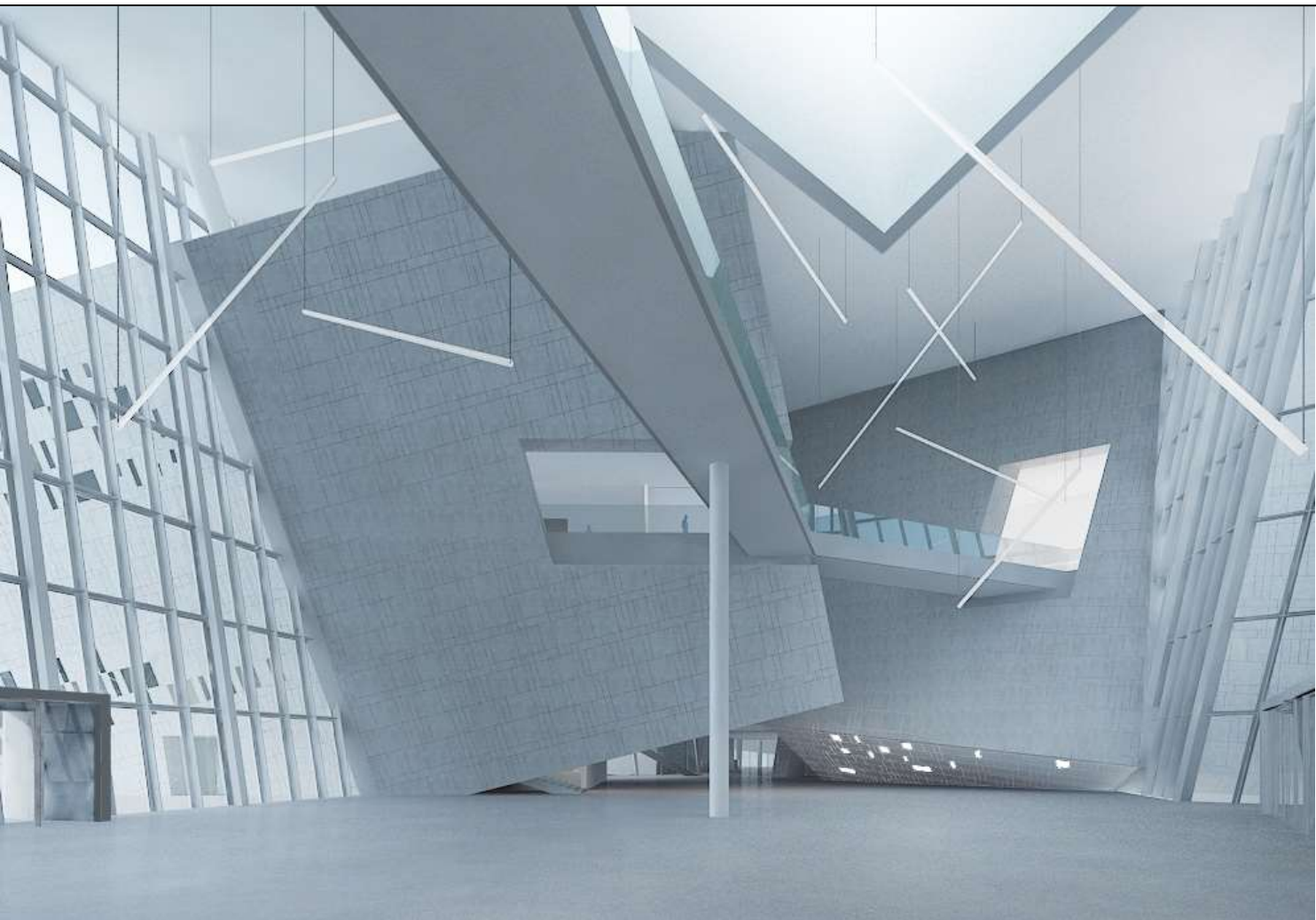
THE PURPOSE OF THE BUILDING IS TO BECOME THE CORE OF CULTURAL LIFE AND COMMUNITY ACTIVITIES IN WEIFANG CITY, A NEW URBAN DEVELOPMENT IN SHANDONG PROVINCE.

THE DESIGN PROPOSAL REVOLVES AROUND THE IDEA OF THE CHINESE TEMPLE: A HUGE CANTILEVERED ROOF SHELTERS THE VOLUMES WHICH IN THEIR ARRANGEMENT REITERATE THE FULL VOID SEQUENCES OF CLASSICAL CHINESE ARCHITECTURE, AT THE SAME TIME COMPLETELY RESHAPING THE TRADITIONAL SPACE, THUS PROVIDING THE TRANSITION TOWARDS A MODERN IMAGE AND A CONTEMPORARY UNDERSTANDING AND USE OF PUBLIC FACILITIES.

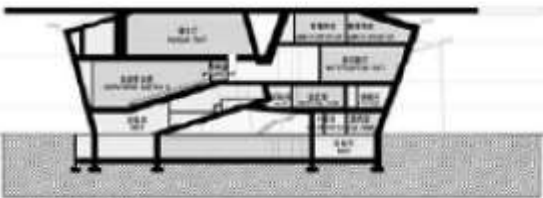
Weifang Urban Exhibition Hall



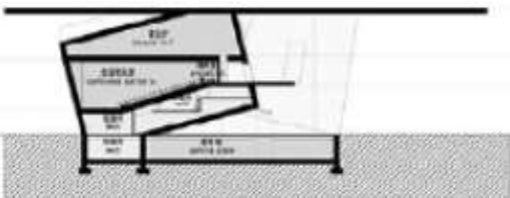
Weifang Urban Exhibition Hall – Studio Pei Zhu 2012 – 2014 - commission – built – 30000 sqm, design leader



Weifang Urban Exhibition Hall – Studio Pei Zhu 2012 – 2014 - commission – built – 30000 sqm, design leader



SECTION C-C

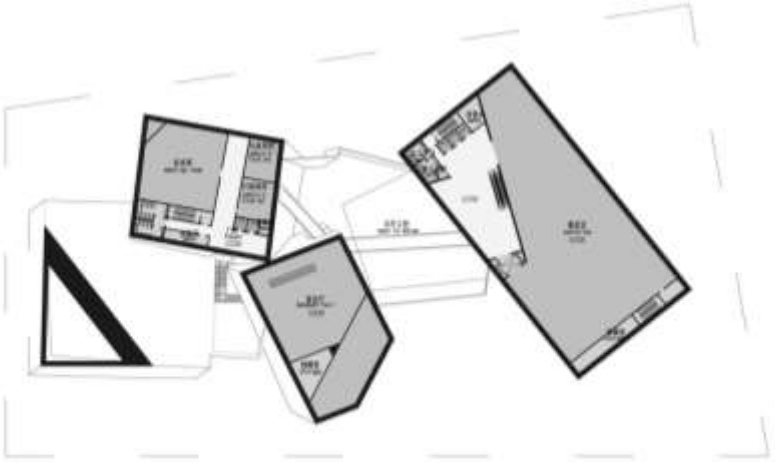
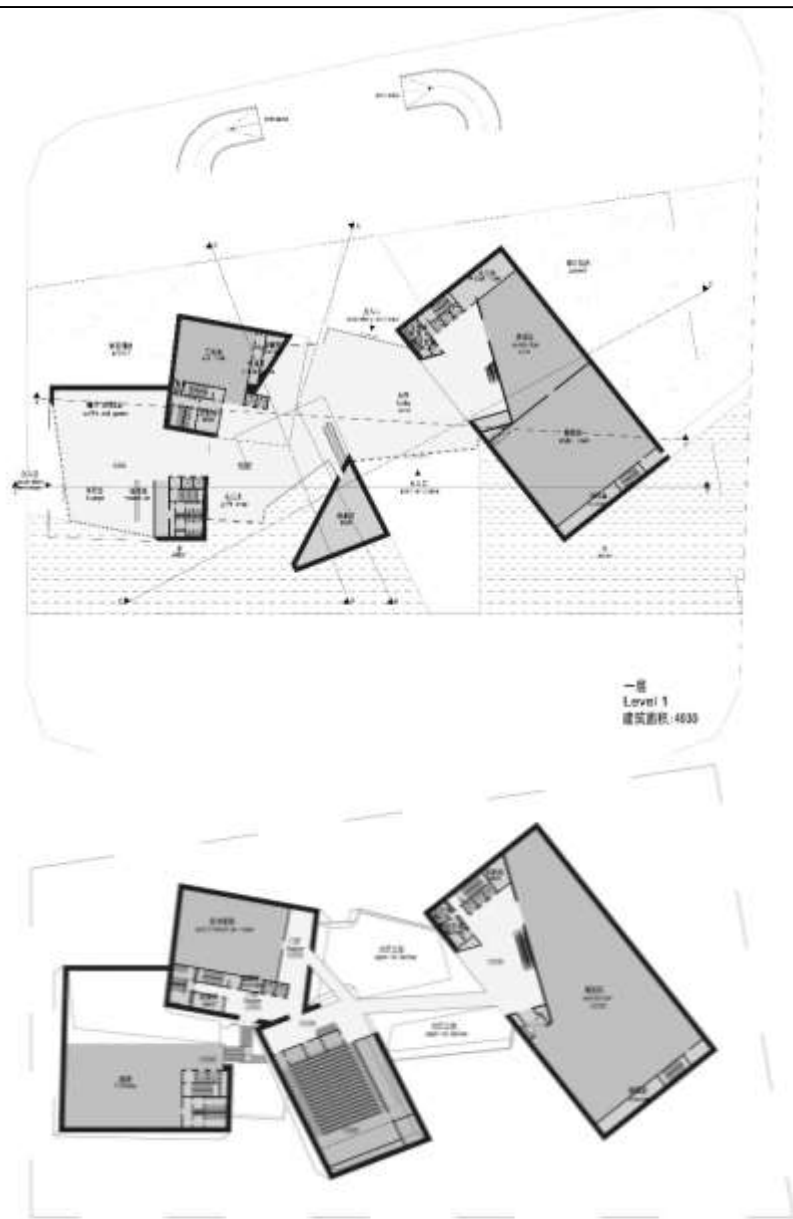


SECTION A-A



SECTION D-D

Weifang Urban Exhibition Hall – Studio Pei Zhu 2012 – 2014 - commission – built – 30000 sqm, design leader



三层
Level 3
建筑面积: 3944

Weifang Urban Exhibition Hall – Studio Pei Zhu 2012 – 2014 - commission – built – 30000 sqm, design leader



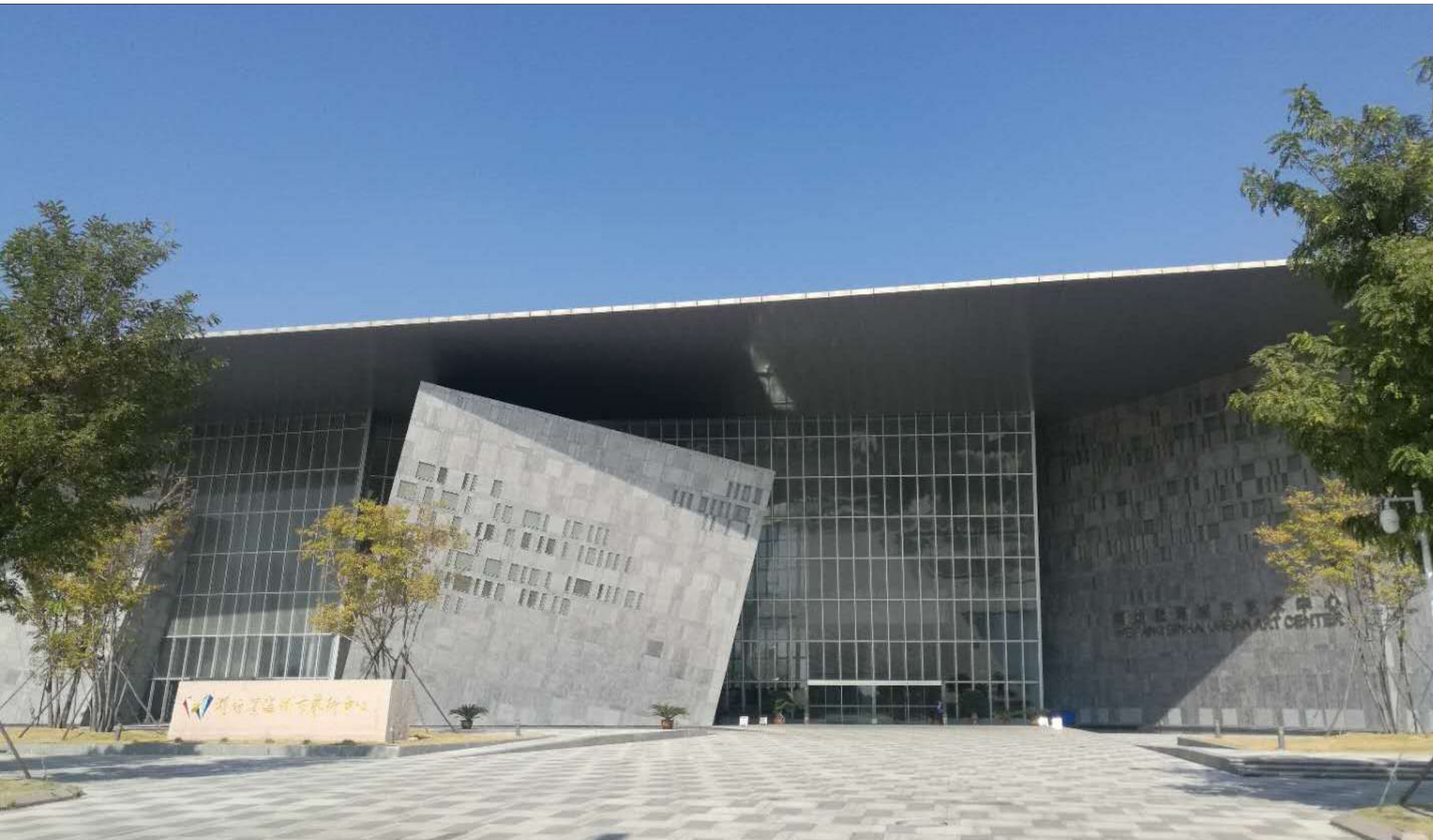
Weifang Urban Exhibition Hall – Studio Pei Zhu 2012 – 2014 - commission – built – 30000 sqm, design leader



Weifang Urban Exhibition Hall – Studio Pei Zhu 2012 – 2014 - commission – built – 30000 sqm, design leader



Weifang Urban Exhibition Hall – Studio Pei Zhu 2012 – 2014 - commission – built – 30000 sqm, design leader



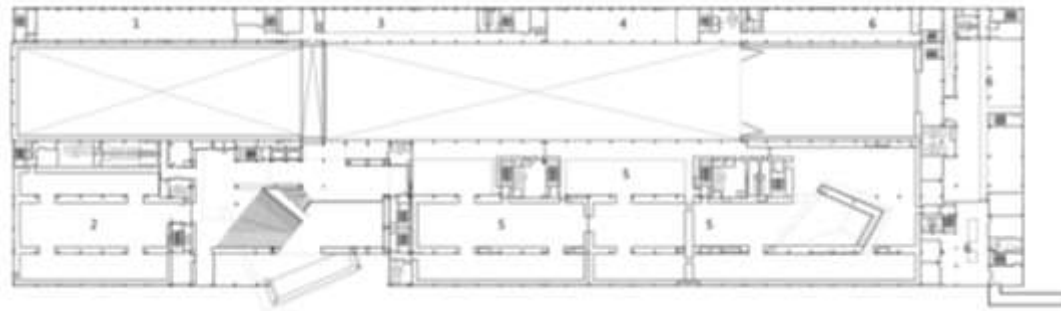
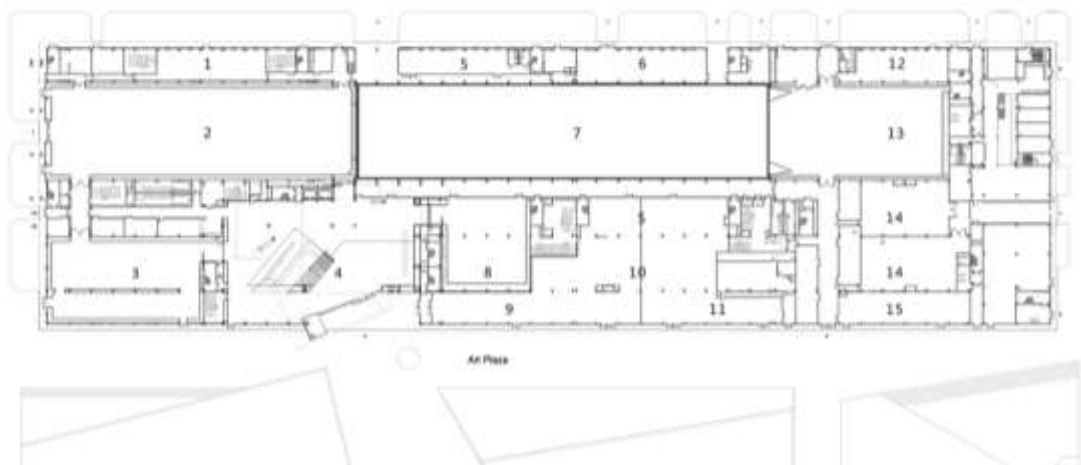
Minsheng Museum

Minsheng Museum of Modern Art is a renovation of an old factory from the 1980s.

Its openness, diversity, flexibility make it different from typical galleries, which are always monotonous and secluded. It will be the largest public dedicated exhibition space for Chinese contemporary art.



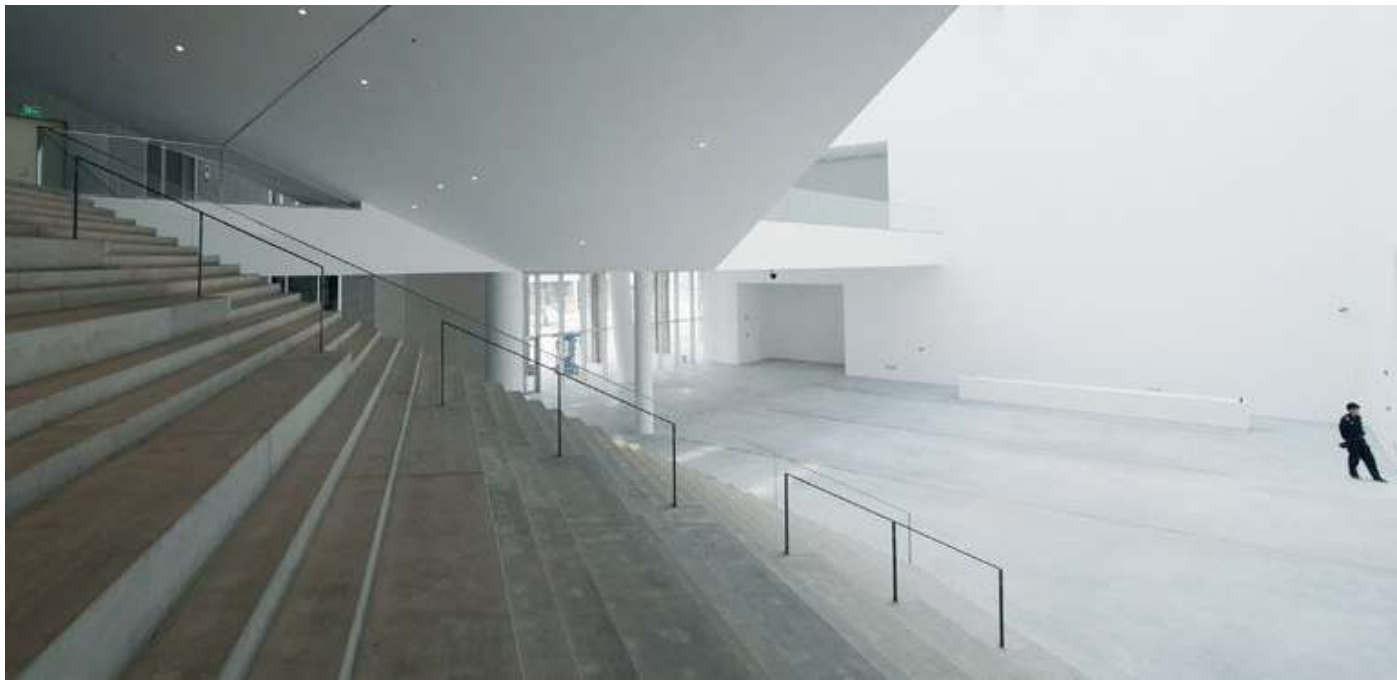
Minsheng Museum Beijing – Studio Pei Zhu 2012–2014–built–design architect - interior design



Minsheng Museum Beijing – Studio Pei Zhu 2012–2014–built–design architect - interior design



Minsheng Museum Beijing – Studio Pei Zhu 2012–2014–built–design architect - interior design





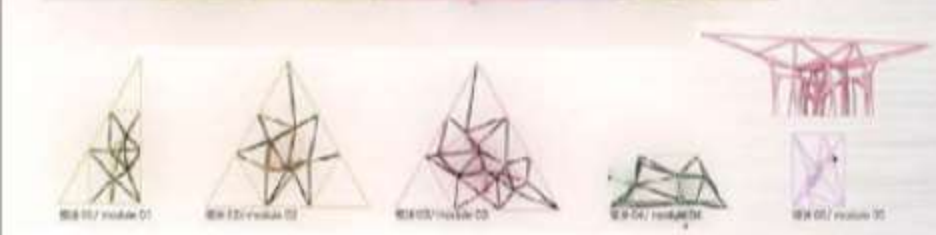
Xishuangbana Theater

Set in the middle of an exquisitely beautiful tropical landscape, the building mimics the physical traits of the surrounding landscape and makes use of the natural resources and materials available in the area. The aesthetic and the structural concept are welded together in a shape that owes its inspiration to nature and to the beautiful shapes of ballerina dancers

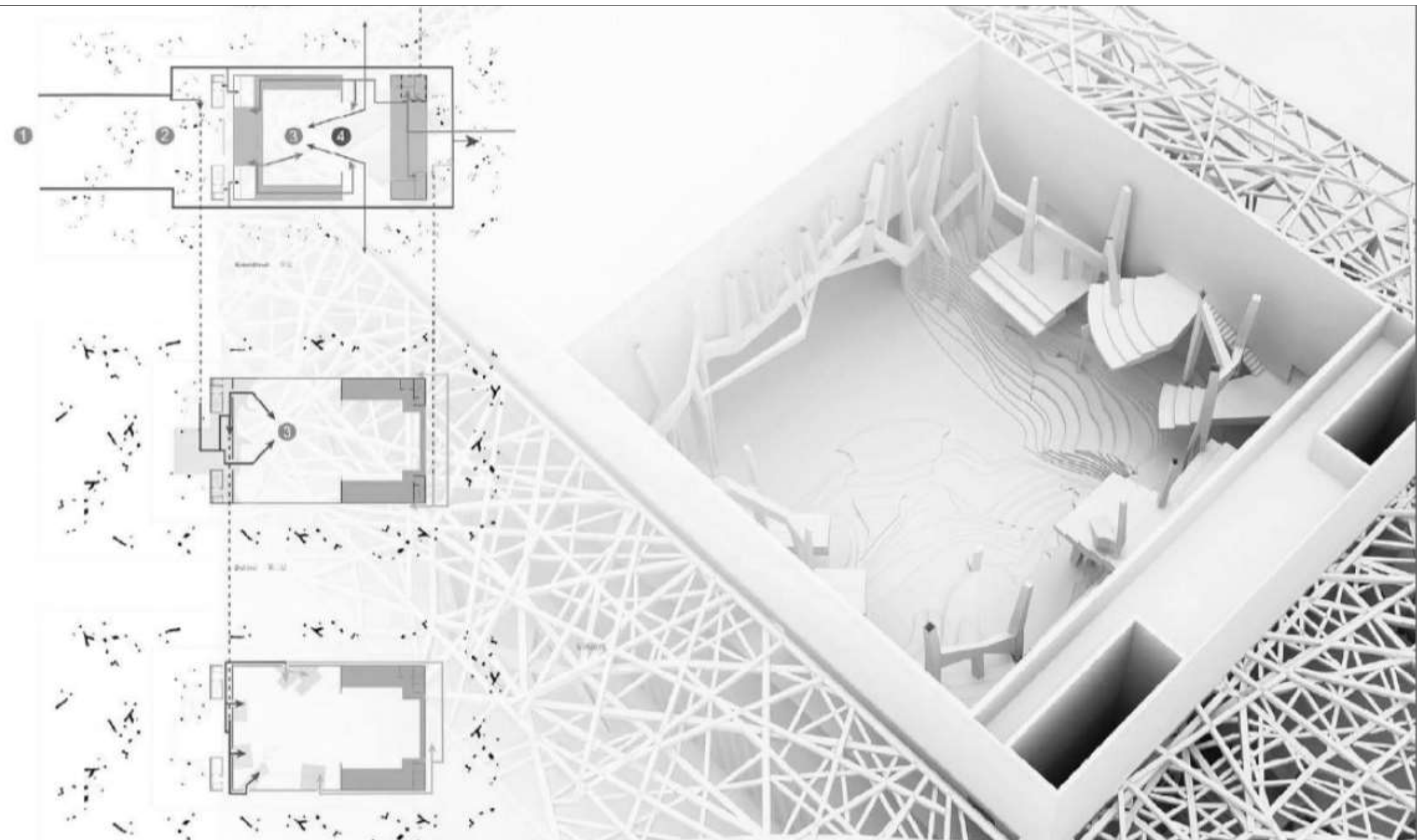
Xishuangbana Theater – Studio Pei Zhu 2013 – 2014- commission – SD – 10000 sqm - project manager–design architect



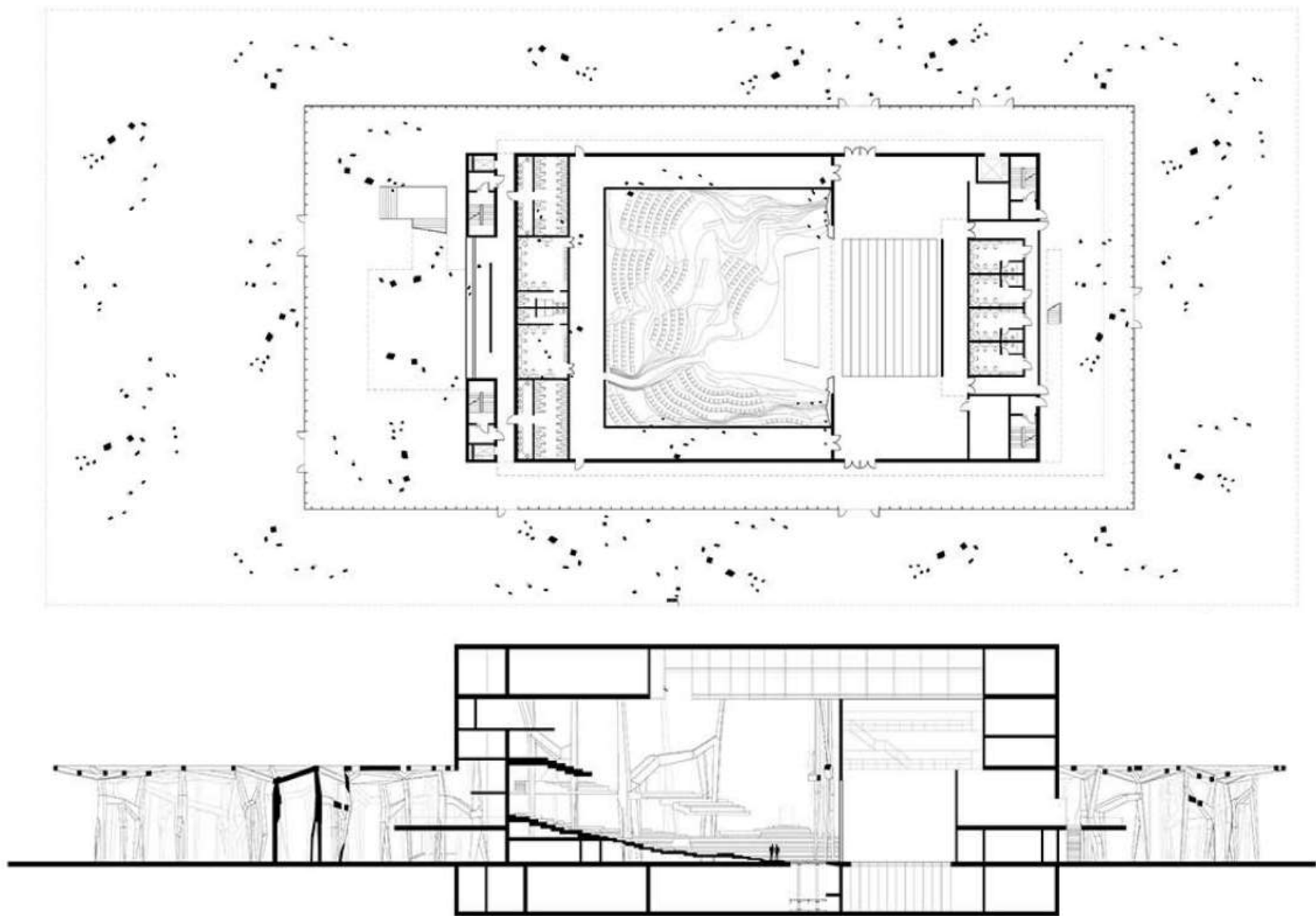
Xishuangbana Theater – Studio Pei Zhu 2013 – 2014- commission – SD – 10000 sqm - project manager–design architect



Xishuangbana Theater – Studio Pei Zhu 2013 – 2014- commission – SD – 10000 sqm - project manager–design architect



Xishuangbana Theater – Studio Pei Zhu 2013 – 2014- commission – SD – 10000 sqm - project manager–design architect



Jinjiang Cultural Center

The proposed green belt creates a strong north-south axis that starts from the river and terminates at the civic buildings adjacent to our site. Transforming our site into a strong public anchor to this urban corridor we focused on fitting the dense programmatic requirements into a building that could be equally as flexible as the adjacent park spaces. The program is broken down into two primary components: the entertainment center, largely driven by the performance theatre, and the cultural center, which consists of the museum, culture center, and library. These components are articulated in two distinct languages which is then unified with a large floating plane. The lifted plane generates an inviting interior/exterior space underneath its canopy. With a simple gesture the plane touches down to connect with the citizen square, allowing for a fluid entry into the elevated roof plane in which the each distinct form is married into one open plan.



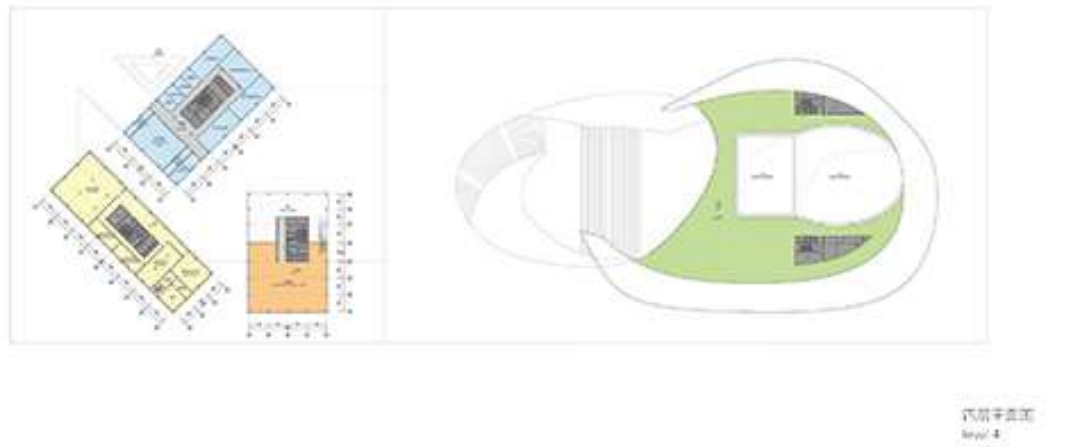
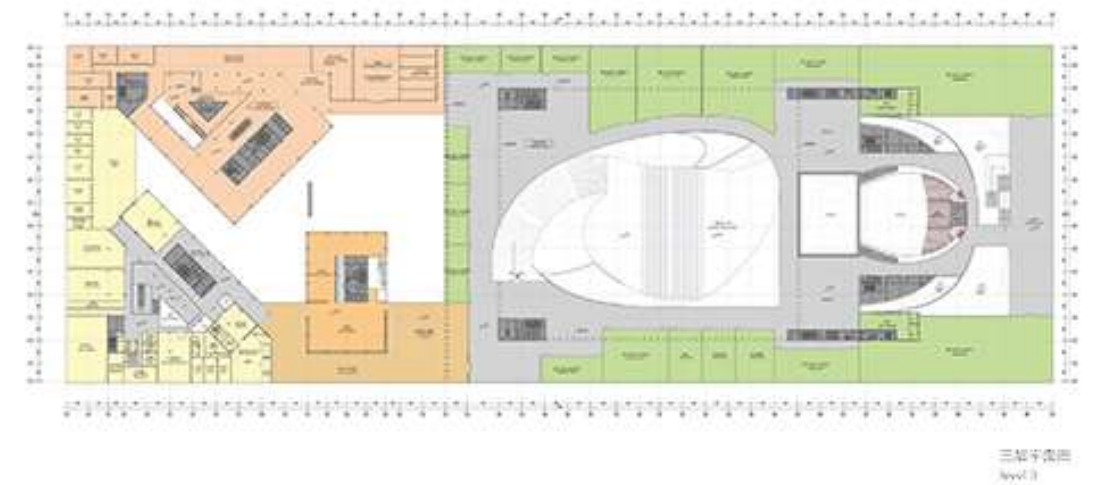
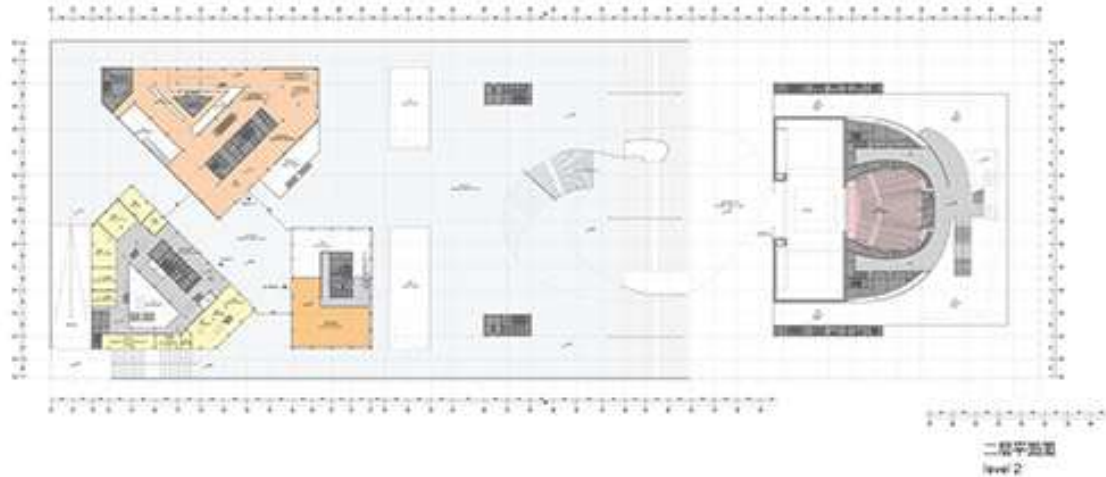
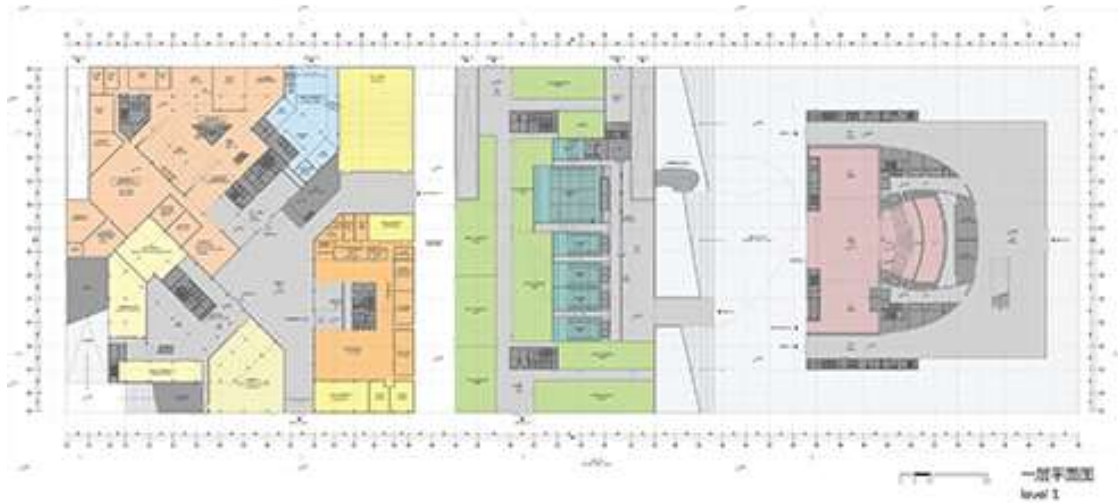
Jinjiang Cultural Center – Studio Pei Zhu 2013 – 2014 commission–SD – 130000 sqm - project manager–design architect



Jinjiang Cultural Center – Studio Pei Zhu 2013 – 2014 commission–SD – 130000 sqm - project manager–design architect



Jinjiang Cultural Center – Studio Pei Zhu 2013 – 2014 commission–SD – 130000 sqm - project manager–design architect



Rhinescheme Gmbh- selected projects

Sanya Showroom

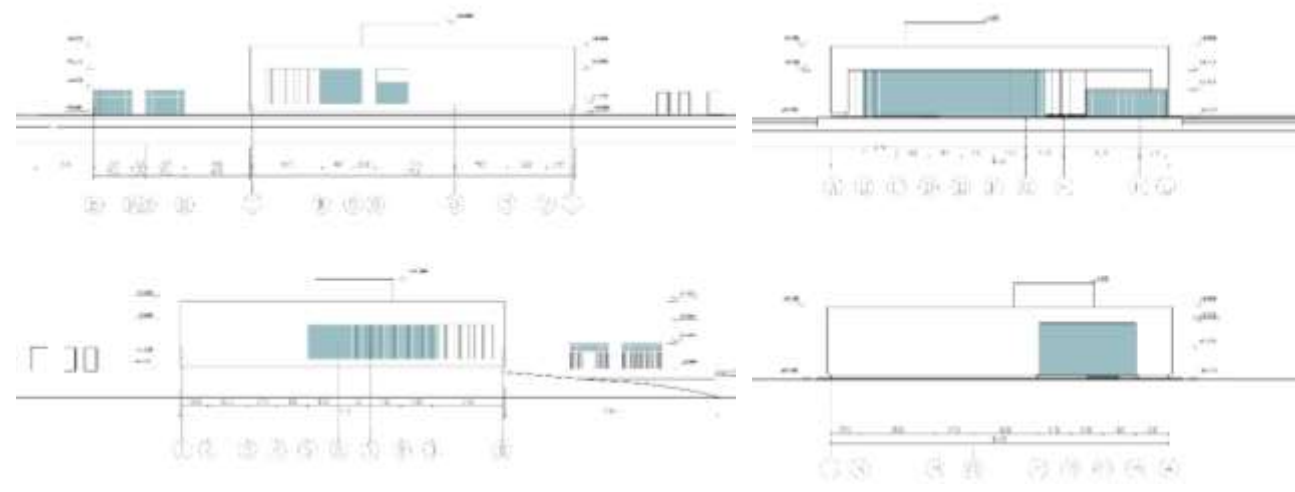
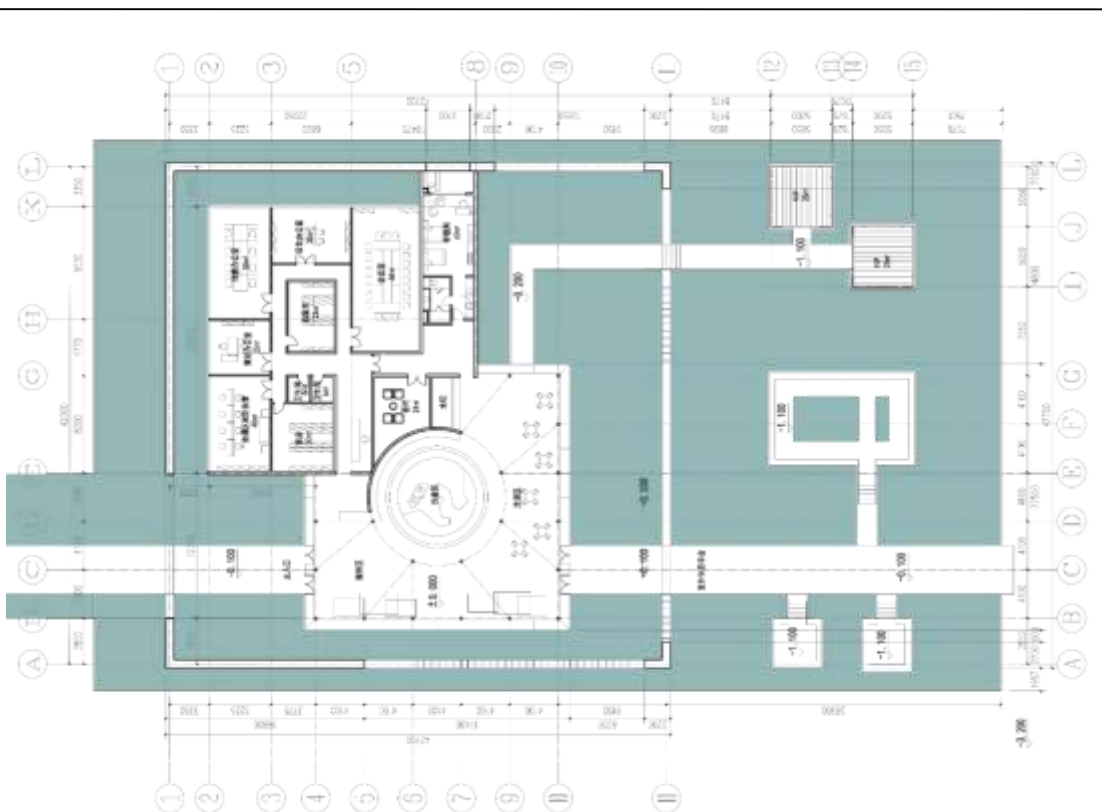
Designed to host showroom for apartment sales, the building harbours a full size replica of an apartment, as well as a big model of the apartment complex and its surroundings. The architecture is focused on a minimalistic design, creating frames of view with simple shapes floating on a mirror of water.



Sanya Showroom - Rhinescheme GMB 2017–commission –schematic design – 1000 sqm –lead designer



Sanya Showroom - Rhinescheme GMB 2017–commission –schematic design – 1000 sqm –lead designer



Yantai Hua'an 5 Stars Hotel

The ideal touristic hotel would be a resort hotel. And the biggest quality of a resort hotel is being surrounded by nature. Bringing nature into an urban style high-rise hotel is hence the challenge and the most important design element. Several suspended gardens which serve different areas and different levels – some public, some private – are the main feature. The roof top serves as a huge open sky garden offering great views and a relaxing environment.



Yantai Hua'an 5 Stars Hotel - Rhinescheme GMB 2016 commission – 24000 sqm - concept design lead designer

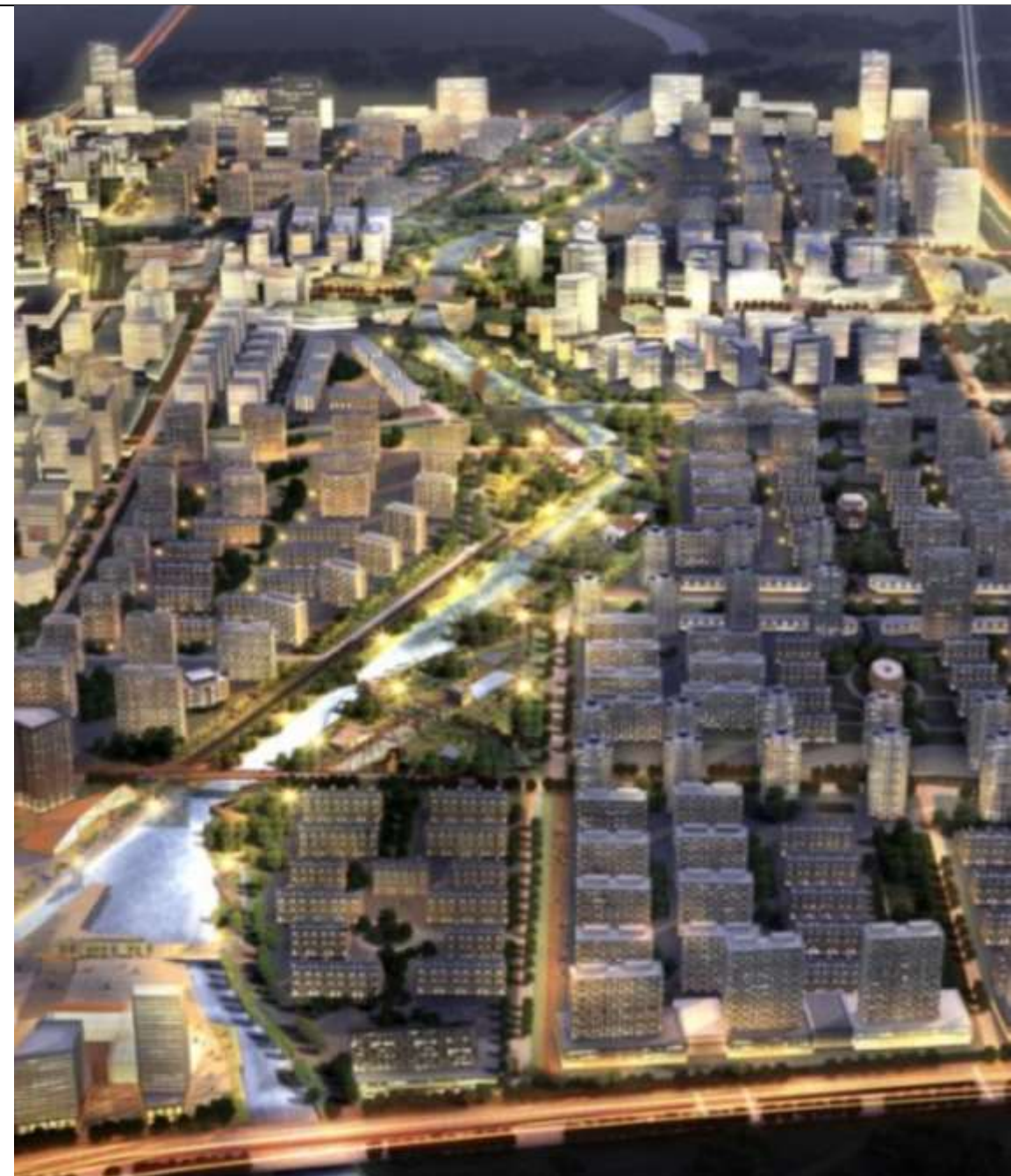




Shanghai Baosteel Pioneer Park

‘Wusongkou Pioneer Park’, will play an important and demonstrative role in major innovative industries such as science & technology, cultural and creative industry, modern services with new materials, smart manufacturing, 3D printing and energy and environmental protection. To enhance the comprehensive urban quality, it will offer large spaces for start-up businesses, workshops, educational programs and social activities as well as leisure and shopping possibilities.

Shanghai Baosteel Pioneer Park - Rhinescheme GMB 2017 –competition–concept design – design architect, urban planning



Shanghai Baosteel Pioneer Park - Rhinescheme GMB 2017 –competition–concept design – design architect, urban planning





Changchun Longxiang

A mixed use project harbouring three hotels, financial building, amusement park, shopping mall, cultural park and residential, the proposed concept is opening up towards the beautiful lake view, with circulation on plot inviting people to explore the natural landscape

Changchun Longxiang - Rhinescheme GMB 2016-commission-concept design-lead designer



Changchun Longxiang - Rhinescheme GMB 2016–commission–concept design–lead designer





Yantai Korean Town

River, sea, forest and mountain. These elements help define the functional distribution and desired atmosphere: Proximity to the water determines the active, leisure and entertainment pole. Proximity to the forest park determines the more quiet, calm and private area for residences. Water and forest are brought into the site in a dramatic way to increase direct contact with the waterfront and the park, for better commercial performance, but at the same time of course with the aim of creating perfect conditions for a life-and-work balance.

Yantai Korean Town - Rhinescheme GMB 2015 – 2017 commission–urban design–project leader



BLVD selected projects



China Merchants Bank – BLVD International 2015 –interior design–team manager, lead designer

A simple and elegant proposal for the reception area of China Merchants Bank Office Tower in Shenzhen, using high ending stone, beautifully lit by subtle hidden lights and creating what looks like an abstract stone composition, separated by small depressions that uncover a deeper steel layer, matched by the corrugated metal ceiling and the shiny steel stair.



Wuhan Merchants Jiangwan International Office – BLVD International 2015 –interior design–team manager, lead designer

The grand lobby has a simple organization around a core. The effect with the light gives the impression as the core is falling from above and the ground lines are the reflection of that movement. By using cuts of white stone we add a subtle vibration in the space without producing too much contrast. The overall is clean and bright, expressing the idea of high ending business.

Thank you!